

NoooX-Box Manual

Version 13.10.2008



NOOOX-BOX USER MANUAL V1.0

SUPPORTED PHONES

Serial	Models
3	3109, 3109cb, 3110, 3250, 3500c, 3500cb
5	5200, 5200b, 5300, 5300b, 5500
6	6085, 6086, 6086v, 6125, 6126, 6131, 6131, 6131 NFC, 6151, 6233, 6234, 6270, 6280, 6300, 6630, 6680, 6681
7	7370, 7373, 7390
8	8600
E	E50, E60, E61 ,E61i, E62, E65, E90
N	N70, N71, N72, N71-5, N73, N75, N77, N80, N90, N91, N91-5, N92, N93, N93i, N95

DESCRIPTION

NoooX-Box needs to be connected only via USB directly to PC (or through a good HUB).

Test Point Cable:

- Black wire = GND
- Yellow wire = CLK
- Green wire = DATA

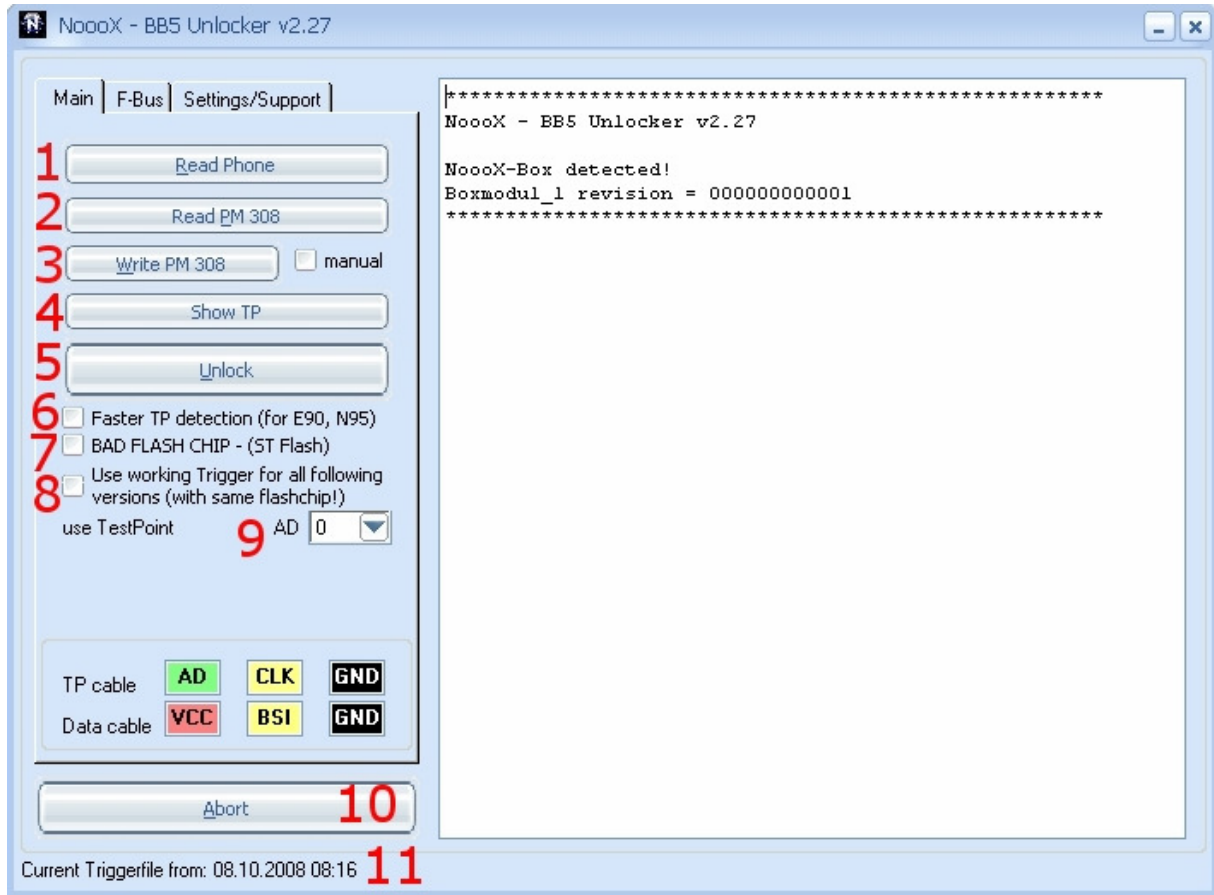
Data cable:

- Black wire - GND
- Green or yellow wire - BSI
- Red wire - VBAT (+ battery pin)
- USB/POP cable

HOW TO START UNLOCK

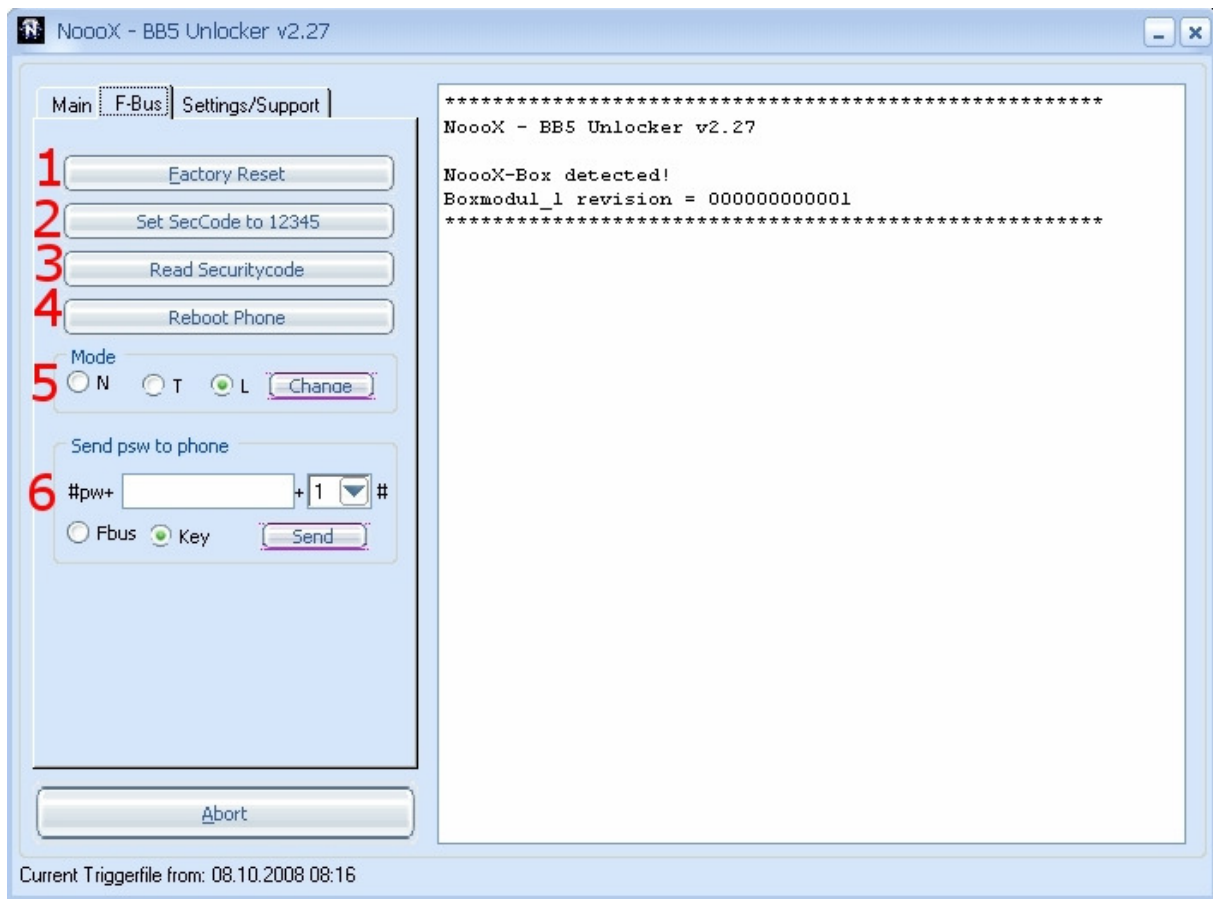
Step	Activity
1	Download latest Software from http://www.nooox.org/
2	Connect Nooox Box to PC
3	Windows ask you now for drivers, take drivers from Nooox Box XP driver folder what you have download before
4	Connect DKU or MINI USB cable to Nooox BOX (SERVICE CABLE)
5	Connect BIG or SMALL test point cable to Nooox BOX (TP cable)
6	Please be careful with test point needles and don't let them to make any shortcut
7	Disassembly the phone and prepare PCB to connect test points
8	Connecting SERVICE CABLE to phone
9	Connect BLACK pin to GND
10	Connect GREEN pin to BSI
11	Connect RED pin to VBAT battery connector + pin
12	The phone need to be in local mode For this you have to press power on button or use a tweezers to simulate them (for 6131, N73, E65)
13	Now press READ Phone (or ALT+R) <pre> MCU SW version: V 06wk41v50.2 28-01-08 RM-159 (c) Nokia IMEI: 3530940XXXXXXXXX Provider: 5020300000000000 Providename: Binariang - Malaysia Profilbit: 0000000000000000 PSW counter: 0/3 - 0/10 Simlock status: >> CLOSED << Server version: SIMLOCK SERVER Model: N95 RM-159 ***** Unlock supported - use AD0 </pre>
14	Connect BLACK pin to phone GND (near flashchip and MCU)
15	Press UNLOCK button, then connect the rest two test points
16	Connect YELLOW pin to CLK test point (check TP Pictures form TP folder be sure to use correct AD Testpoint (AD0 or AD8) (we do not use AD1 testpoint!!!)
17	Connect GREEN pin to DATA (ADx) test point
18	Follow the instructions and do not abort until the software end process.
19	Remove YELLOW and GREEN test points after unlock ;-)
20	That's all ;-)

SOFTWARE DESCRIPTION:

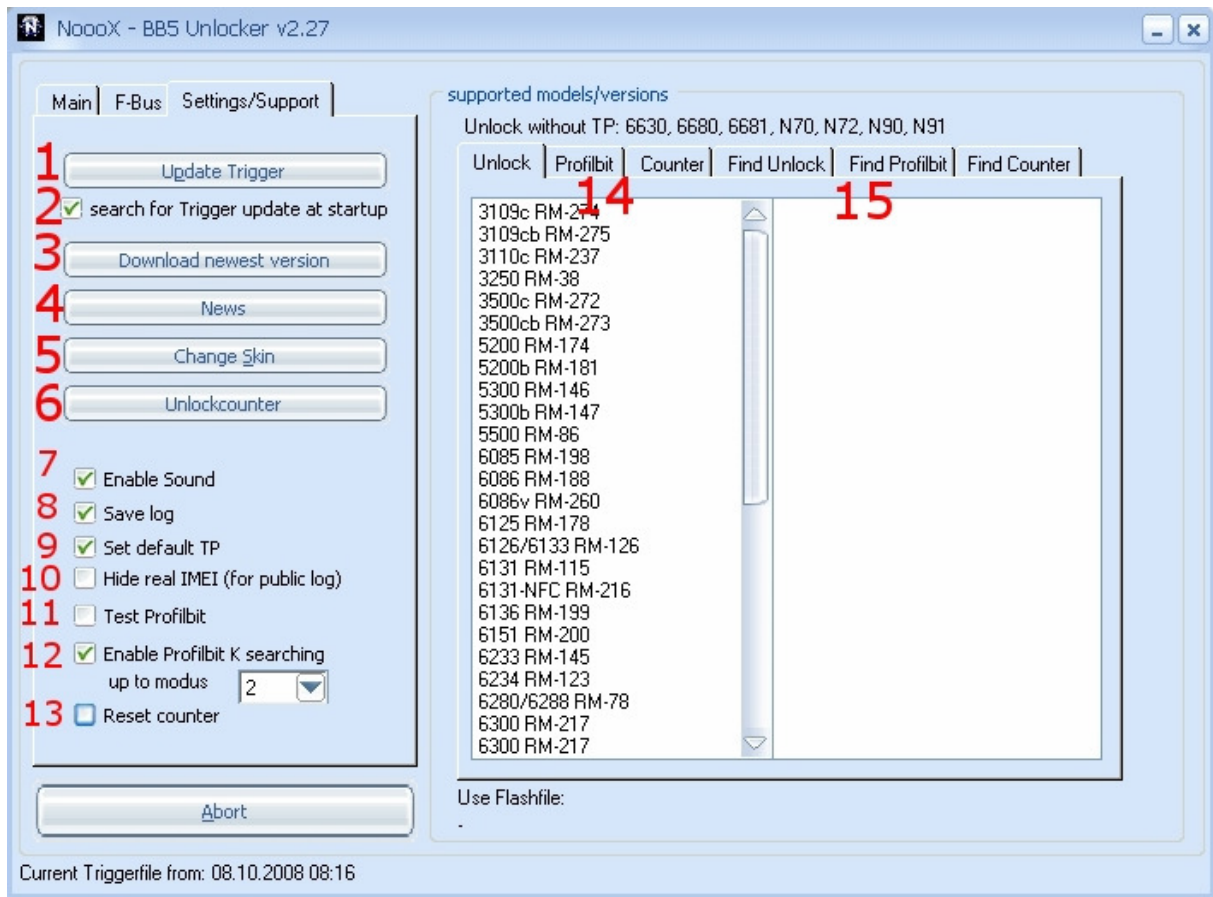


Step	Activity
1	<p>READ PHONE: READ ALL INFOS FROM PHONE</p> <p>For example:</p> <pre> MCU SW version: V 06wk41v50.2 28-01-08 RM-159 (c) Nokia IMEI: 3530940XXXXXXXXX Provider: 5020300000000000 Providername: Binariang - Malaysia Profilbit: 0000000000000000 PSW counter: 0/3 - 0/10 Simlock status: >> CLOSED << Server version: SIMLOCK SERVER Productcode: 0xxxxx Model: N95 RM-159 ***** Unlock supported - use AD0 </pre>
2	<p>READ PM 308</p> <p>It safes some important details from your phone (counter etc..) but you don't need to press it when you press Unlock, PM308 automatically got saved</p>
3	<p>WRITE PM 308</p> <p>Search automatically the oldest / best PM 308 Example: if you have 2 backups 3/3 0/10 and 0/0 10/10 it take automatically</p>

	0/0 10/10 MANUAL If you know what you do you enable them and you can write the pm back what you want
4	Show TP Show TP all TP pictures. Move the mouse over the picture for bigger preview or click into the picture to open it with your standard viewer
5	UNLOCK This unlocks your phone, including find triggers, profilbit trigger and counter trigger. The software switches automatically over to the mode, which is required. Please hold TP as long as software try to unlock your phone.
6	Faster TP detection (for E90, N95) Tick this checkbox for faster TP detection (is default for N95 and E90)
7	BAD FLASH CHIP – (ST FLASH) If you tick this check box the unlock function try more than 7 times to unlock your phone before entering find trigger mode
8	Use working Trigger for all following versions (with same flashchip!) Tick this checkbox if you have more phones with the same version and same flashchip. If unlock function unlock found the correct trigger it use this trigger for all following phones! -> faster unlocking
9	Testpoint selection If you have a version that can't be unlocked after some tries with default TP than use to the second TP and try it again.
10	Abort Abort the current operation
11	It shows the current version of the Trigger config file



Step	Activity
1	Factory Reset Is factory reset ☺
2	Set SecCode to 12345 Set security code to 12345
3	Read Securitycode Read the securitycode
4	Reboot the phone
5	Change mode You can change phone mode (N = normal-, T = test- and L = local Mode)
6	Send psw to phone If you have a working unlockcode you can send it via fbus to phone (you need one left unlockcounter)

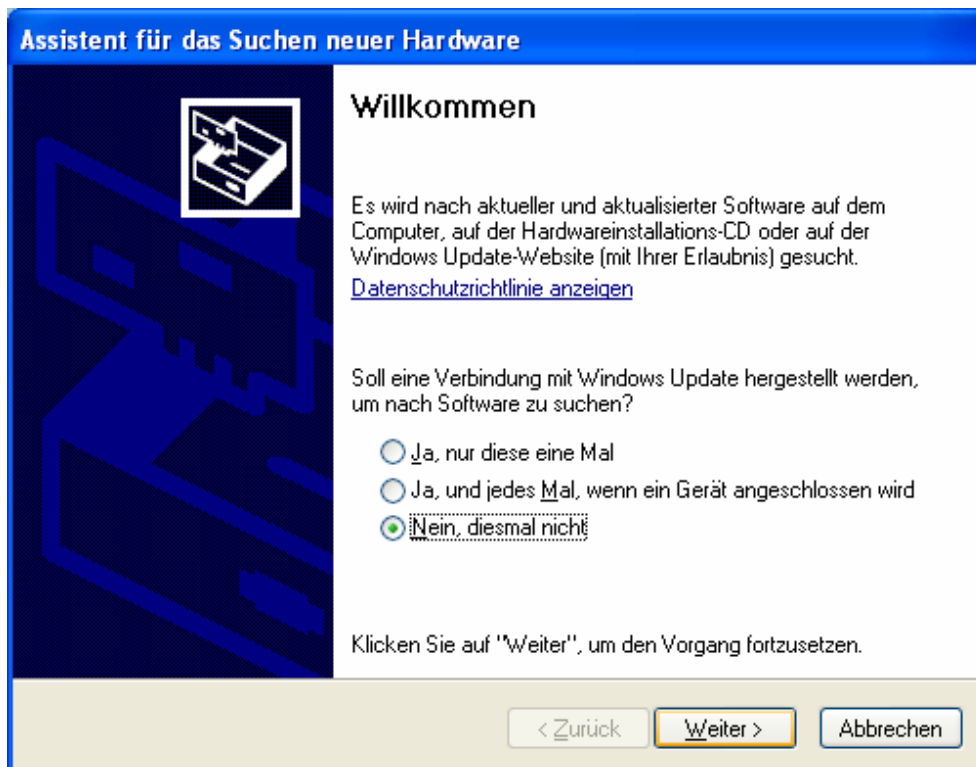


Step	Activity
1	Update Trigger Download latest Triggerfiles
2	search for Trigger update at startup Download latest Triggerfiles at startup every day
3	Download newest version You can download newest version with only click only ;-)
4	News Show you the latest news from NoooX-Box Team
5	Change Skin You can change the skin from NoooX-software (select a skin from AppFace folder)
6	Unlockcounter Count all successfully unlocked phones (from current install folder)
7	Enable Sound Enable sound messages
8	Save Log Save the log into LOG folder
9	Set default TP

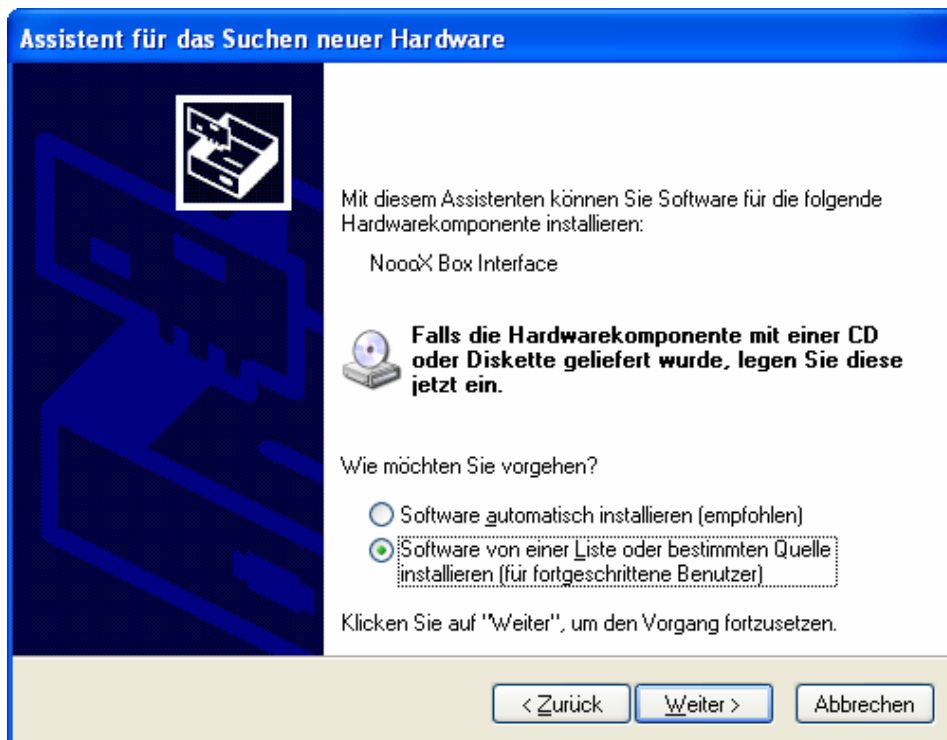
	Set default TP read phone Info
10	Hide real IMEI This checkbox is useful if you make public log
11	Test Profilbit Some phones has "locked profilbit" but can be unlocked without profilbit patch. Tick it and the software test if profilbitpatch is required for unlock
12	Enable Profilbitpatch K searching Nokia firmware has different profilbit check for keypress and fbus code. If you have troubles with keypress code you can disable this function.
13	Reset Counter (** include first in the world AD0 counter patch **) If you tick this function the software reset the counter to 0 if a valid counterpatch was found. If you untick it you can bypass the codechecking and unlock it with full counter ;-) (even 4/3, 5/3,...15/3,...)
14	Unlock / Profilbit / Counter Show you the supported models and versions
15	Find Unlock / Find Profilbit / Find Counter Show you the supported models and versions for find mode Find mode is a function that search for a valid Trigger for your phone if it is not supported in direct unlock

Correct USB Driver installation:

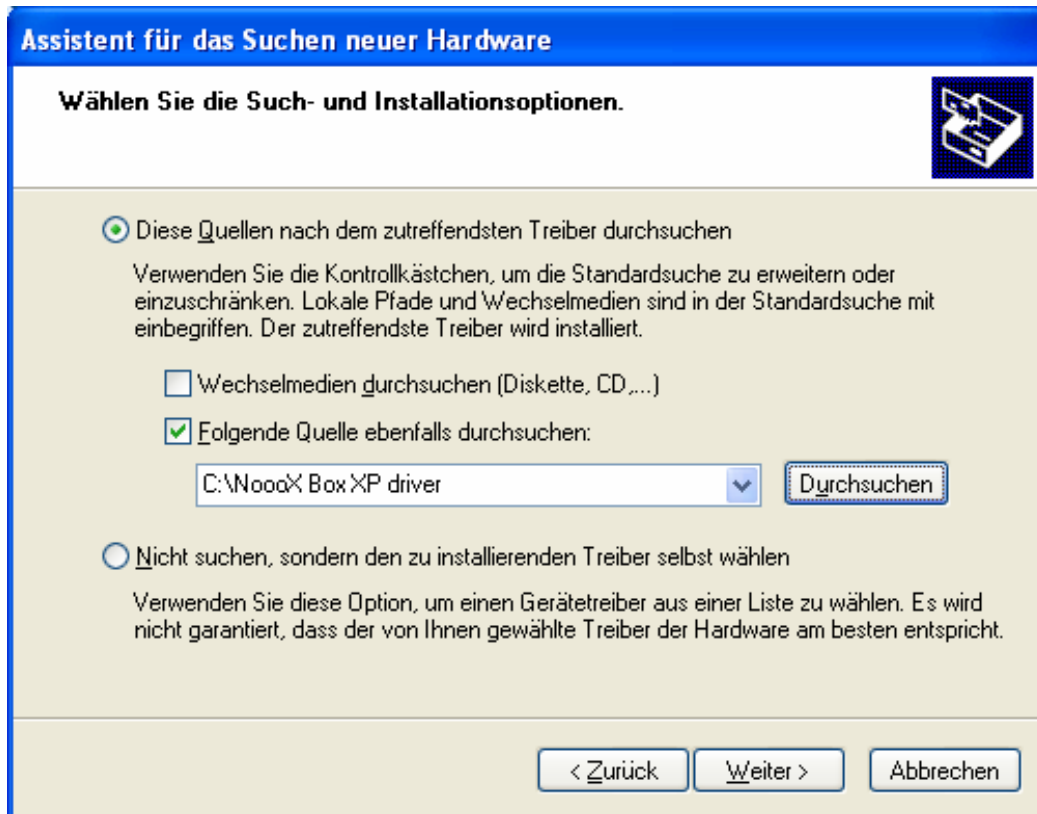
1. connect NoooX-Box to PC USB-Port
2. wait some seconds and you see install window



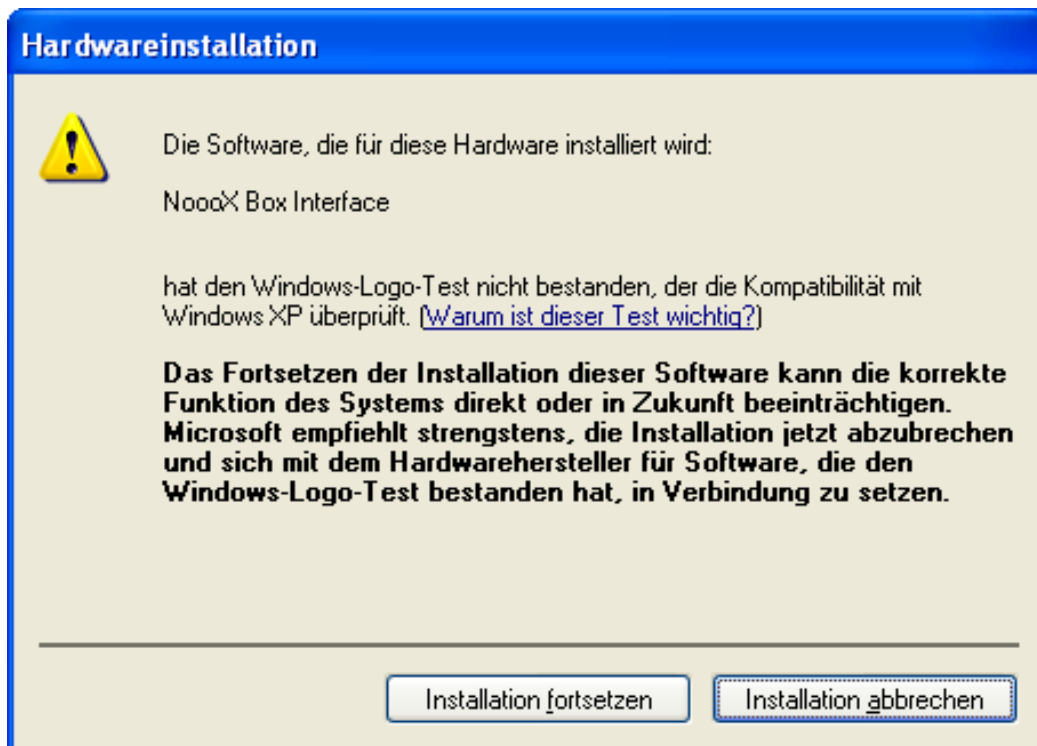
3. select No,... and press NEXT button (Weiter)



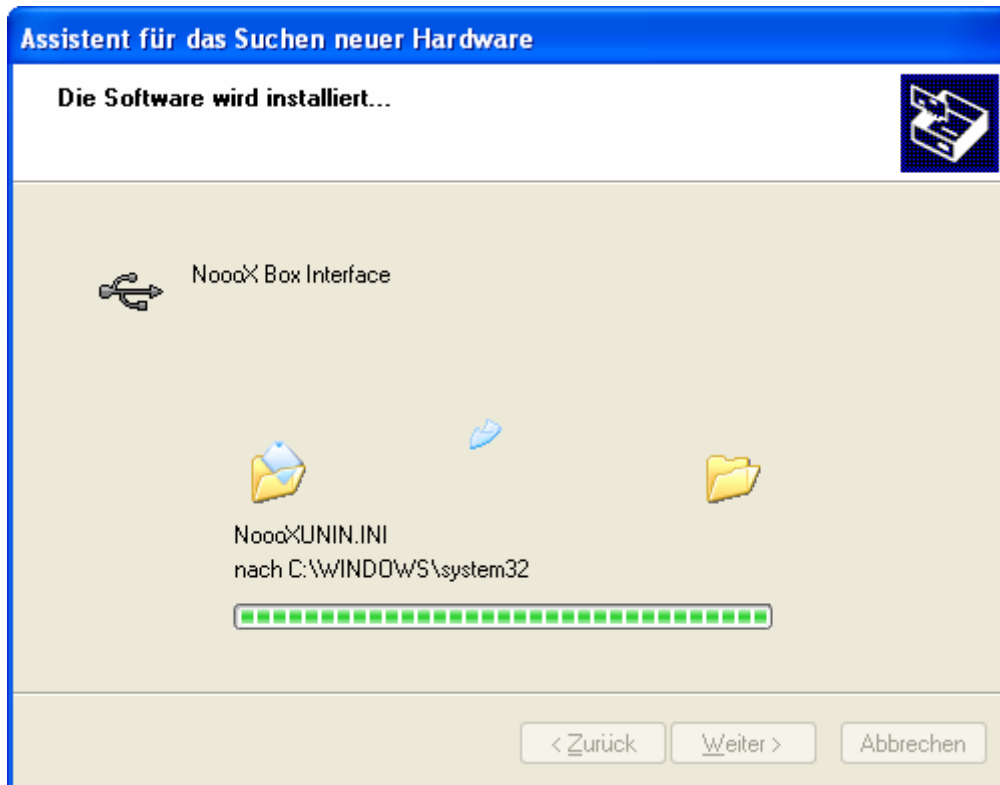
4. select manual installation and click NEXT button



5. select correct folder from NoooX Box XP driver and click NEXT button



6. Windows install the driver now ...continue installation!!! ...do not abort if Windows ask you about Windows-Logo-Test



Now you are ready to use NooX-Box software ;-)
